

Gas Detection.



## Technical Datasheet



**PolyXeta®2**

### Accessories

for PX2, SX1 and SSAX1 Sensors

<b>CAL01-PX2</b>	<b>CALIBRATION ADAPTER</b>
<b>SG-PX2</b>	<b>STAINLESS STEEL SPLASH PROTECTION / SPLASHGUARD</b>
<b>MOUNTING KIT</b>	<b>MOUNTING KIT</b>
<b>ZU-PX2-CG-SN</b>	<b>ATEX CABLE GLAND IN METAL</b>
<b>ZU-PX2-CG-PL</b>	<b>ATEX CABLE GLAND IN PLASTIC</b>
<b>MSR_PEN_PX2</b>	<b>MAGNETIC PEN FOR OPERATION</b>
<b>NPT ADAPTER</b>	<b>FOR NPT THREAD</b>
<b>ZU-PX2-SHP-20</b>	<b>SENSOR HEAD PROTECTION</b>

Specifications subject to change without notice.

PolyXeta® is a registered trademark of MSR-Electronic GmbH.  
[www.msr-electronic.de](http://www.msr-electronic.de)



# Calibration Adapter Cal01-PX2 for PolyXeta®2 Sensors

## DESCRIPTION

Calibration adapter for comfortable gas supply to sensors of the PX2 (SX1) and SSAX1 series.

## APPLICATION

The PolyXeta®2 calibration adapter Cal01-PX2 is used for the targeted supply of zero and test gases to the sensor head.

## FEATURES

- Suitable for all gases
- Easy to use
- Perfect coverage of the sensor head
- Necessary for perfect calibration

## SPECIFICATIONS

CAP	
Material	Stainless steel
Dimensions (D x G)	25 mm x 40 mm (D x G) (0.98 in. x 1.57 in.), see figure below
Internal thread	M30 x 1,5
HOSE	
Material	PVC-P polyvinyl chloride
Temperature range	-20 °C to +60 °C (-4 °F to 140 °F)
Length	1 m (39.37 in.)

## ORDERING INFORMATION

**Cal01-PX2** Calibration adapter for PolyXeta®2 sensors

## DIMENSIONS

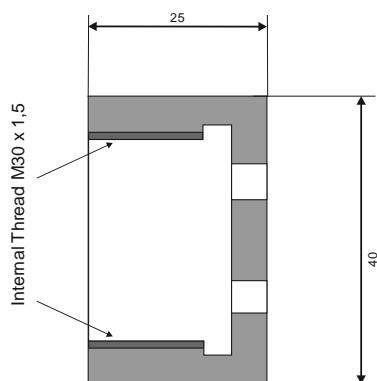


Figure: Dimensions of the cap



# Stainless Steel Protection Cap SplashGuard SG-PX2 for PolyXeta® 2 Sensors

## DESCRIPTION

**Stainless steel cap for protecting the SX1 or SSAX1 sensor head against splash water.**

The splash guard is screwed onto the external thread at the end of the sensor head by hand. When properly mounted, the SplashGuard protects the sensor from rain and splash water from all directions.

The gas inlet at the bottom of the SplashGuard offers the possibility to calibrate the sensor with the SplashGuard mounted. This facilitates the calibration during maintenance of the device since the protection cap does not have to be dismantled beforehand. The gas supply (reaction time) is not affected by the splash guard.

## APPLICATION

The SplashGuard is used for gas warning systems that are installed outdoors, unprotected from weather influences. It can also be used to protect the sensor during cleaning.

## FEATURES

- Protection against rain, splash water and other weather conditions
- Suitable for zone 1 and 2
- Easy installation
- Assembly and disassembly possible at any time
- Calibration possible through provided gas inlet

## SPECIFICATIONS

PHYSICAL	
Material	Stainless steel
Dimensions	38 x 55 mm (D x H) (1.5 in. x 2.17 in.)
Protection class	IP66

## ORDERING INFORMATION

**SG-PX2**    SplashGuard for PolyXeta®2 sensors



# Mounting Kit

## DESCRIPTION

Mounting kit consisting of a 2-part spacing bracket with the appropriate screws, as well as 1x dowel and 1x screw for wall mounting.

## APPLICATION

The mounting kit for SSAX1 sensors is used to fix the stainless-steel housing to the wall. It can also be used to mount PolyGard®2 SC2 sensors in stainless steel housing with cable extension.

## FEATURES

- Easy installation
- Perfect fit of the sensor head

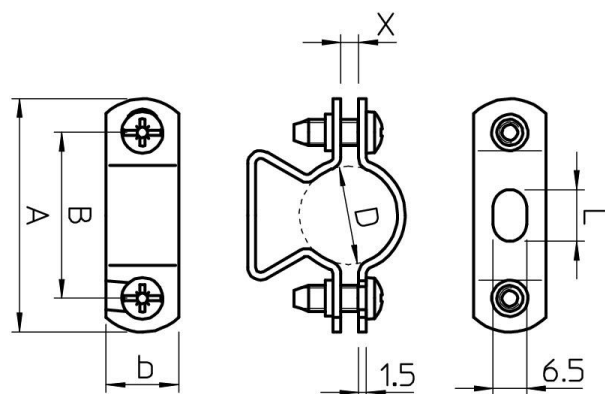
## SPECIFICATIONS

BRACKET	
Material	Steel
Dimensions, see fig. 2	
• Bracket	(A x b) 58 x 16 mm (2.28 x 0.63 in.)
• Integration of the M25 housing	D = 24–29 mm (0.95–1.15 in.)
• Fixing	L = 10 mm (0.39 in.)
Fixing accessory	Plastic dowel & appropriate screw

## ORDERING INFORMATION

**Mounting Kit** Mounting kit for SSAX1 sensors / SC2 sensors in stainless steel housing with cable extension

## DIMENSIONS



Dimensions of the bracket



Mounting bracket with screw and dowel

# Metal ATEX Cable Gland for Zone 1 and 2, ZU-PX2-CG-SN

## DESCRIPTION

**ATEX cable gland for PolyXeta®2 PX2 sensors, in nickel-plated brass with neoprene seal, suitable for zone 1 and 2.**

## APPLICATION

The ATEX cable gland ZU-PX2-CG-SN made of nickel-plated brass is used as Ex-d certified cable entry on the PolyXeta®2 PX21 or PX2-2 sensor for permanently installed cables and wires and is suitable for zone 1 and 2.

## FEATURES

- Easy mounting
- ATEX (Ex-d) type of protection

## SPECIFICATIONS

CABLE GLAND	
Material	Messing nickel-plated (CuZn gal. Ni)
Dimensions	
• Clamping range	7–12 mm (external cable diameter / 0.20–0.27 in.)
• External thread	NPT ¾"
• Thread length	22,5 mm (0.89 in.)
Temperature range	-60 °C to +140 °C (-76 °F to 284 °F)
REGULATIONS	
Marking according to 2014/34/EU	Ⓔ II 2 GD Ex db eb IIC
EC-Type Examination Certificate	INERIS 12 ATEX 0032X
IECEX- Examination Certificate	IECEX INE 12.0025X
Marking according to IECEx	Ex db eb IIC
Protection class according to EN 60529	IP66 / IP68 - 10 bar (within the specified clamping range)
Thread	NPT thread according to ANSI/ASME B1.20.1

## ORDERING INFORMATION

**ZU-PX2-CG-SN** Metal ATEX cable gland for zone 1/2



# Plastic ATEX Cable Gland only for Zone 2, ZU-PX2-CG-PL

## DESCRIPTION

ATEX cable gland for PolyXeta®2 PX2 sensors, made of glass fibre reinforced polyamide, suitable for zone 2.

## APPLICATION

The ATEX cable gland ZU-PX2-CG-PL made of glass fibre reinforced polyamide is used as Ex-e certified cable entry on the PolyXeta®2 PX2-2 sensor for permanently installed cables and lines and is suitable for zone 2.

## FEATURES

- Easy mounting
- ATEX (Ex-e) type of protection

## SPECIFICATIONS

KABELVERSCHRAUBUNG		
Material	<ul style="list-style-type: none"><li>Screw joint</li><li>Seal/O-ring</li></ul>	Polyamide, glass-fibre reinforced NBR
Colour		Black RAL 9005
Dimensions	<ul style="list-style-type: none"><li>Clamping range</li><li>External thread</li><li>Thread length</li><li>Total length</li></ul>	9–16 mm (external cable diameter) NPT ¾" 14 mm (0.55 in.) 45 mm (1.77 in.)
Temperature range		-20 °C to +85 °C (+4 °F to 185 °F)
Wrench size		33 mm (1.30 in.)
Tightening torque		5 Nm
REGULATIONS		
Ex-protection		Class I Div 2 Groups A, B, C, D, Class II Div 1 Groups E, F, G, II 2G Ex eb IIC Gb
Protection class according to EN 60529		IP68 - 10 bar (within the specified clamping range)

## ORDERING INFORMATION

**ZU-PX2-CG-PL** Plastic ATEX cable gland for zone 2



# Magnetic Pen MSR\_Pen\_PX2

## DESCRIPTION

The magnetic pen MSR\_Pen\_PX2 is equipped with a permanent magnet and is used for contactless menu operation of the PolyXeta® 2 sensor series PX2 with display.

## APPLICATION

The magnetic pen MSR\_Pen\_PX2 is used to operate the PolyXeta® 2 PX2 display in order to perform safe parameterisation and configuration of the PX2 device without having to open it.

## FEATURES

- Easy handling
- Precise operation
- No need to open the PX2 housing in ATEX zone

## SPECIFICATIONS

PEN WITH CLIP	
Material	PLA (bio based)
Colour	Light grey, matt
Dimensions	
• Length	12,8 mm
• Diameter	1,4 mm (without clip)
Magnet	Permanent magnet nickel plated

## ORDERING INFORMATION

**MSR\_Pen\_PX2**    Magnetic pen for PX2 Sensors



# NPT Adapter

## DESCRIPTION

**Stainless steel adapter for connection to SX1 and SSAX1 sensor heads, not ATEX compliant.**

## APPLICATION

The NPT-M30 adapter allows the transition from an M30 fitting on the PolyXeta®2 SX1 or SSAX1 Sensor to an NPT ¾" thread and is used to connect blowers or pipes with NPT threads. When using the adapter, the unit must not be used in ATEX zones.

## FEATURES

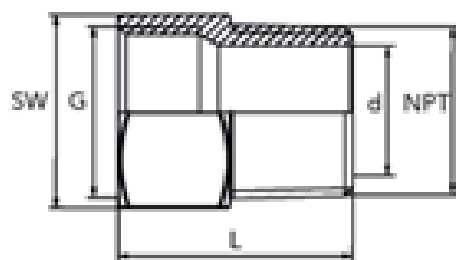
- Simple mounting
- Not approved for use in ATEX zones

## SPECIFICATIONS

ADAPTER NPT-M30	
Material	Stainless steel 1.4305
Dimensions (L x d)	41 x 20 mm
Thread	
External thread	NPT ¾" cone-shaped
Internal thread	M30
Hexagonal head	Wrench size (SW) 32 mm

## ORDERING INFORMATION

**NPT Adapter**     NPT Adapter out of stainless steel



L: 41 mm  
SW: 32 mm  
d: 20 mm

Dimensions of NPT Adapter





# Sensor Head Protection for PolyXeta<sup>®</sup> 2 Sensors ZU-PX2-SHP

## DESCRIPTION

Plastic protective cap incl. pull-off tab to cover sensors of the SX1 (PX2) and SSAX1 series.

## APPLICATION

The elastic protective cap is placed on the sensor to protect it from contamination during installation, cleaning and painting work and to protect the sensor element from poisoning, e.g. by silicone vapours.

**When commissioning, it is essential to remove the tight-fitting cap to ensure the proper functioning of the sensor.**

## FEATURES

- Easy to use
- Perfect coverage of the sensor head
- Protection against pollution/poisoning

## SPECIFICATIONS

CAP	
Material	Plastic LDPE
Colour	Blue
Dimensions inside	Ca. 29,8 mm x 19,1 mm (d x h) see figure below
Compatible thread standard	UNF JIC
Compatible thread sizes	13/16"-12

## ORDERING INFORMATION

**ZU-PX2-SHP-20** Sensor Head Protection SchuKa for PolyXeta<sup>®</sup> 2 Sensors SX1/SSAX1, set with 20 protective caps

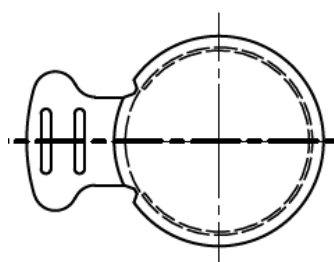
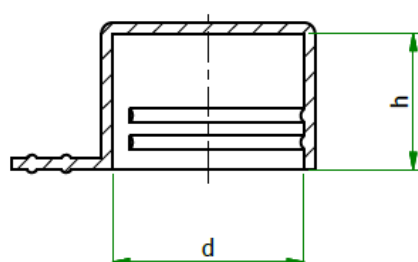


Figure: Dimensions of Cap